

CONCEPT PLAN

Bannockburn Oval - Amenities Upgrade

Bannockburn Oval is a 4.1-hectare sportsground located in Pymble, bordered by residential streets and connected to Bradford Street via a bush reserve. The site includes an athletics track, synthetic cricket wicket, soccer field, playground, a scout hall and a 1970s-era amenities building. The existing building is planned for full demolition and replacement with a new structure to support the oval's recreational and sporting use.

LOCATION PLAN



Existing photos



SCOPE OF WORK

To meet the needs of its growing community, Ku-ring-gai Council is proposing to replace the existing outdated amenities block at Bannockburn Oval. The current facility no longer meets accessibility standards or the requirements of local clubs and the wider community. The new facility aims to become one of the most inclusive and functional sporting amenities in the region.

The proposed upgrade includes:

- A new, modern building with improved accessibility (DDA compliant)
- New public toilets, including a fully accessible DDA toilet and change room
- Upgraded canteen facilities
- New changing rooms for both home and away teams
- A new clubroom for community and sporting use
- Basement-level storage for easier access to sporting equipment
- A pump room to support a future water harvesting system
- A new viewing deck with cover
- Improved on-site parking with accessible parking spaces

These upgrades have been a long-term goal for the club and local community and will help ensure Bannockburn Oval continues to serve as a valuable and accessible recreational facility for all users.

PLEASE NOTE: FINAL EXTENT OF WORKS IS SUBJECT TO COMMUNITY CONSULTATION, DETAILED DESIGN AND FUNDING AVAILABILITY.



EXISTING AMENITIES - VIEW FROM OVAL



ARTIST IMPRESSION - VIEW FROM OVAL

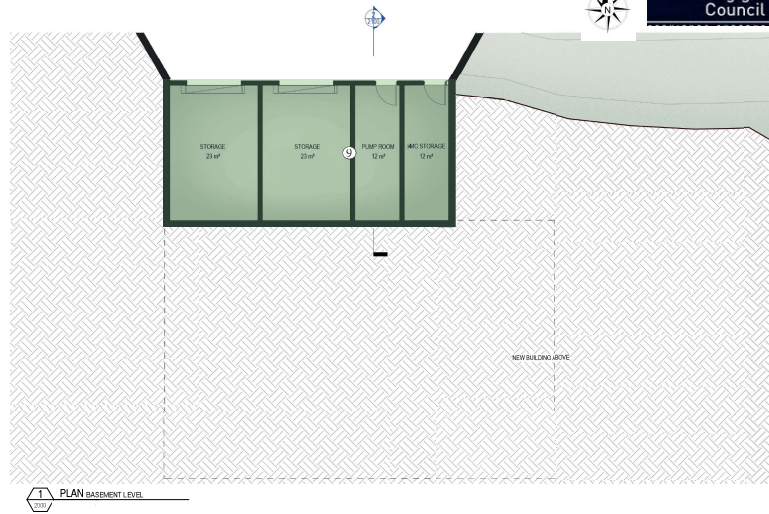
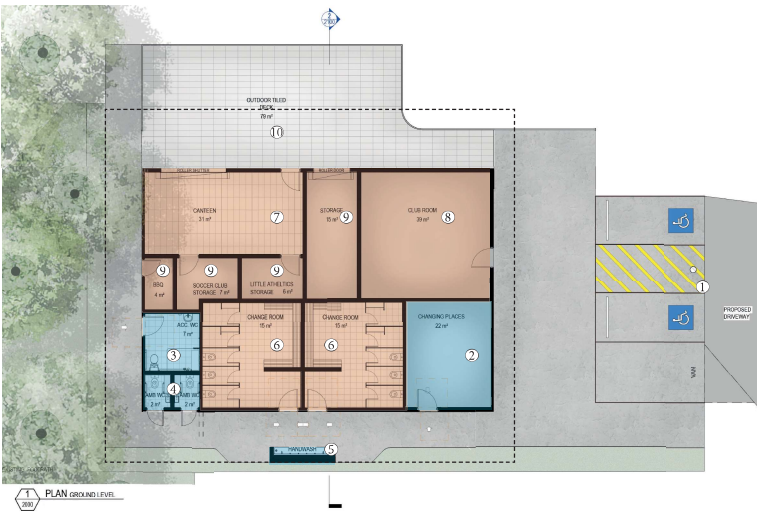


Bannockburn Oval - Amenities Upgrade

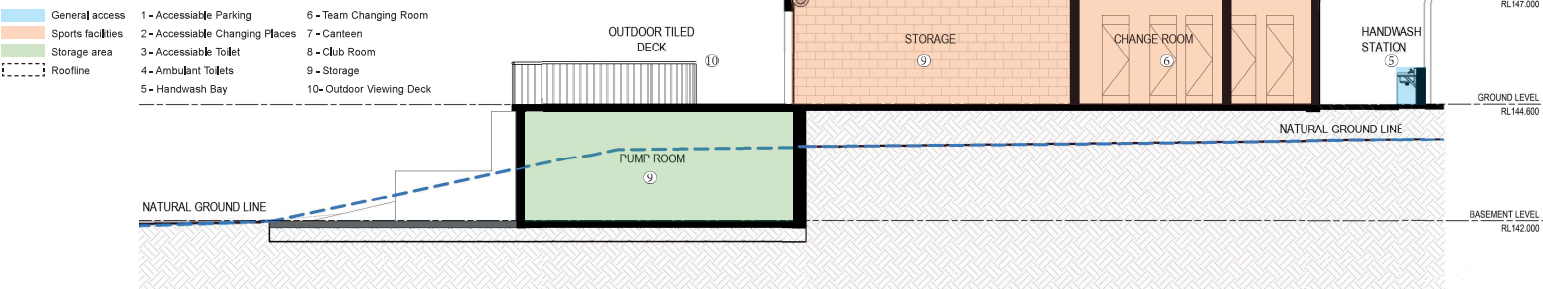
Bannockburn Rd, Pymble

CONCEPT PLAN

Bannockburn Oval - Amenities Upgrade



LEGEND



PLEASE NOTE: FINAL EXTENT OF WORKS IS SUBJECT TO COMMUNITY CONSULTATION, DETAILED DESIGN AND FUNDING AVAILABILITY.

2 SECTION SHORT SECTION - OPTION A
Scale: 1:100

Bannockburn Oval - Amenities Upgrade

Bannockburn Rd, Pymble